

LBI Three-a-week - #82

From Donohue Sarff sent April 2, 2017

"First Summer Session at Mount Carmel (our new location) on Lake Carlos, Alexandria, Minnesota

July 2 to August 27, 1938 - Dedication Week July 16-23

Write to Lutheran Bible Institute - 1619 Portland Avenue - Minneapolis, Minnesota"

These words, printed on this brilliant red paper, describe the very first camping season at Mount Carmel. We can imagine the sense of satisfaction the leaders had as they embarked on what has become an almost 80-year ministry. I could not end my Mount Carmel series without showing this important piece. It, along with many other documents and photos are in the Library at Mount Carmel. It would be well worth your time to examine them **when you are at Mount Carmel ... and hopefully that will be soon!**

APPLICATION BLANK

As a student at the Lutheran Bible Institute Summer Session, I wish to apply for _____ weeks, from _____ to _____, 1938.

Name _____

Street and Number _____

City and State _____

If possible, I wish to room with _____

I will bring my own linens and blankets _____

I desire that L. B. I. furnish linens and blankets _____

(Clip and mail to Lutheran Bible Institute)

EXPENSES

Board, Room, and Registration in cabins for 4 persons:

Students to furnish linens, towels, and blankets \$10.00 per person per week (Pillows furnished by L. B. I. without extra charge.)

L. B. I. to furnish linens and blankets \$12.00 per person per week

Housekeeping Cottages (Including registration):

8 person Cottages \$25.00 per week (\$1.00 per week extra for ice. Small charge for electricity.)

A deposit of \$5.00 is required on housekeeping cottages. No refund in event of cancellation.

Be sure to bring your own bedding for housekeeping cottages. Pillows furnished by L. B. I.

A grocery store is maintained on the grounds for the convenience of guests.

Trailers and Tents \$1.00 per week (Registration fee—\$2.00 per person per week.)

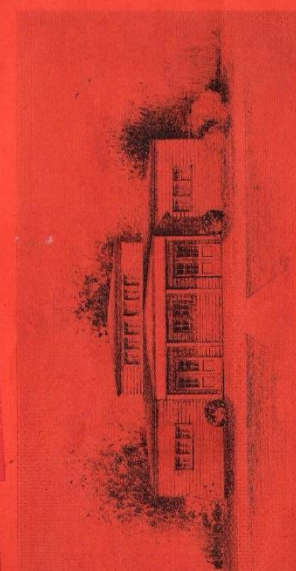
Make all reservations with

THE LUTHERAN BIBLE INSTITUTE
1619 Portland Avenue, Minneapolis, Minn.
After July 2, address Mount Carmel, Alexandria, Minnesota

1938

Dedication Week


July 16-23



SKETCH OF PROPOSED CHAPEL FOR LAKE CARLOS

FIRST SUMMER SESSION
at
MOUNT CARMEL
(OUR NEW LOCATION)
ON LAKE CARLOS,
ALEXANDRIA, MINNESOTA

July 2 to August 27, 1938
(Eight Weeks)



WRITE TO
LUTHERAN BIBLE INSTITUTE
1619 Portland Avenue
Minneapolis, Minnesota

THE FACULTY

Dr. Samuel Miller
Dr. C. J. Seeger
Rev. A. B. Anderson
Rev. C. Gerntzka
Rev. H. C. Randolph
Rev. H. J. Struce
Rev. A. W. Knock

THE PROGRAM

Each week's work will begin on Saturday. If possible you should arrive on Saturday afternoon and register at the L. B. I. office. No classes on Saturday. A short prayer hour Saturday evening at 7:45.

SUNDAYS:

We invite and welcome visitors to our Sunday services as well as to our week-day sessions.

11:00 a. m.—Morning Worship
3:00 p. m.—Bible Study
8:00 p. m.—Evening Service

WEEKDAYS:

Our daily schedule affords opportunity for study, for rest, and for recreation.

8:00—Breakfast
9:00-12:15—Classes
12:30—Lunch
1:30-2:30—Rest Period
2:30-6:00—Recreation
6:00—Dinner
8:00-9:15—Evening Service
10:30—"Fights Out"

PERSONAL CONFERENCES

Members of the faculty gladly offer their services for private interviews to such as have spiritual problems for which they seek guidance and help.

MOUNT CARMEL
ON LAKE CARLOS, ALEXANDRIA, MINNESOTA

DEDICATION WEEK, July 16-23, with special Dedication Services on Sunday, July 17, and evening services throughout the week centering on this theme.

Mount Carmel is a beautiful site located on Lake Carlos, Alexandria, Minn. The grounds consist of forty acres, with half a mile of beautiful bathing beach. The equipment consists of an auditorium seating between 500 and 600; dining hall and lobby overlooking Lake Carlos; two cabins for four persons each; ten housekeeping cottages for eight persons each; adequate comfort stations, running water in all cottages and cabins, electric lights. Ample room for trailers and tents.

HOW TO REACH MOUNT CARMEL

Our new summer home is located about 150 miles northwest of Minneapolis, eight miles north of Alexandria, in the midst of Vacation Land.

U. S. Highway No. 52 is paved all the way between Minneapolis and Fargo. Take No. 59 going west out of Alexandria and follow markers to Mount Carmel. Tickets by bus or train should be purchased to Alexandria. The L. B. I. station car will convey students from either bus or railroad. Fare, 25c. (Tickets of station car on cover of this folder.)

THE COURSES

Hours	First Week July 2-8	Second Week July 9-15	Third Week July 16-23	Fourth Week July 24-30	Fifth Week July 31-Aug. 6	Sixth Week Aug. 7-13	Seventh Week Aug. 14-20	Eighth Week Aug. 21-27
8:00-10:00	Exodus Rev. Knock	Acts Dr. Seeger	Zedechiah Dr. Miller	II Cor. Chapters Rev. Knock	Judges Rev. Gerntzka	Mark Rev. Randolph	Isaiah Dr. Seeger	Zeke Rev. Knock
10:30-11:30	X P E R I E N S							
11:30-1:30	Messiah of Ezra Rev. Knock	How to Pray Rev. Anderson	Prayer in the Name of Jesus Dr. Seeger	For What to Pray Rev. Knock	Hindrances to Prayer Dr. Miller	The Lord's Prayer Rev. Gerntzka	Paul's Prayer Rev. Randolph	Jesus' High Priestly Prayer
1:30-4:30	B I B L E S							
4:30-12:15	Galatians Rev. Anderson	McClatchy Rev. Anderson	I John Rev. Randolph	Hebrews Dr. Seeger	I Thessalonians Rev. Knock	Psalms 22-27 Rev. Knock	James Dr. Miller	Amos Dr. Seeger
8:00 p. m.	EVENING SERVICES							
8:15	Rev. Gerntzka	Rev. Knock	Rev. Anderson Rev. Gerntzka	Dr. Miller	Rev. Randolph	Dr. Seeger	Rev. Knock	Dr. Miller

GENERAL MATTERS

All reservations should be made at the Lutheran Bible Institute office. If possible make application blank out at least two weeks in advance. No deposit necessary, except for housekeeping cottages.

If some one is making arrangements for you to stay in a housekeeping cottage, it is not necessary for you to send any application form in advance. The one in charge should register for the entire group upon arrival.

All groups of young people should be accompanied by some adult person to act as chaperone.

Persons under sixteen years of age will not be accepted unless accompanied by some older person.

If you have made a reservation and must cancel it, sufficient notice should be given us to admit some one else to your place.

WHAT TO BRING

Bible and notebook. (American Revised Version of the Bible used.) Can be purchased at the L. B. I. Book Store if desired.

Simple clothes and some extra wraps for cool weather. There are no blankets requiring formal dress. Girls are asked not to wear knickerbockers, slacks, or shorts about the grounds. Walking shoes will be most comfortable. Rubbers, raincoat and umbrella for rainy weather.

Bathing suit (keep to slip over bathing suit while walking to and from lake), tennis racket, balls and tennis camera, fishing tackle, etc. A flashlight is a convenience.

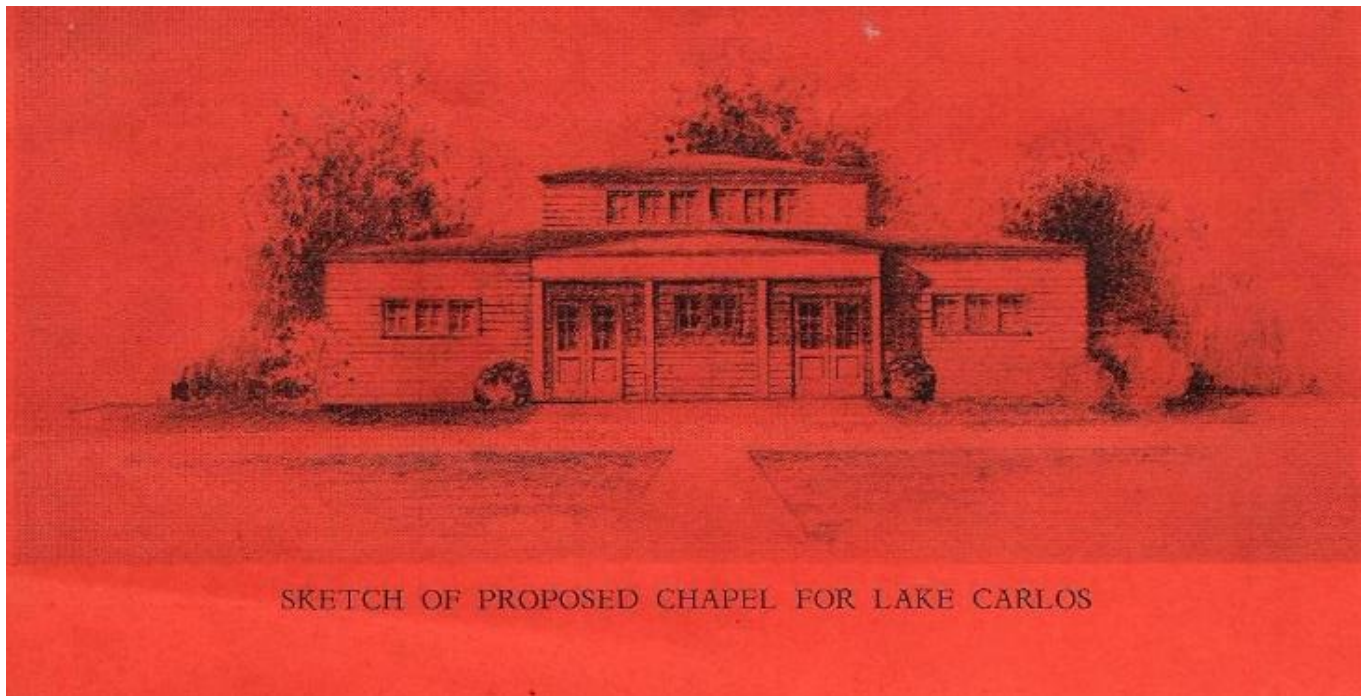
Extra blanket if you need one.

NOTE: Pillows will be provided on all beds.

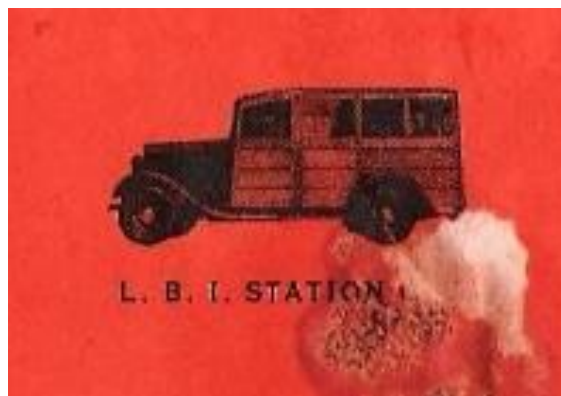
THE COURSES

Hours	First Week July 2-9	Second Week July 9-16	Third Week July 16-23	Fourth Week July 23-30	Fifth Week July 30-Aug. 6	Sixth Week Aug. 6-13	Seventh Week Aug. 13-20	Eighth Week Aug. 20-27
9:00-10:00	Exodus Rev. Knock	Acts Dr. Sodergren	Zechariah Dr. Miller	II Corinthians Rev. Stolee	Judges Rev. Gornitzka	Mark Rev. Randolph	Isaiah Dr. Sodergren	Luke Rev. Stolee
10:00-10:15	R E C E S S							
10:15-11:00	Meaning of Prayer Rev. Stolee	How to Pray Rev. Anderson	Prayer in the Name of Jesus Dr. Sodergren	For What to Pray Rev. Knock	Hindrances to Prayer Dr. Miller	The Lord's Prayer Rev. Gornitzka	Paul's Prayer Rev. Randolph	Jesus' High-Priestly Prayer
11:00-11:15	R E C E S S							
11:15-12:15	Galatians Rev. Anderson	Malachi Rev. Randolph	I John Rev. Randolph	Hosea Dr. Sodergren	I Thessalonians Rev. Knock	Psalms 22-27 Rev. Stolee	James Dr. Miller	Amos Dr. Sodergren
	Group Meetings Dr. Sodergren		Group Meetings Rev. Stolee	Group Meetings Rev. Randolph	Group Meetings Dr. Sodergren	Group Meetings Dr. Miller	Group Meetings Rev. Stolee	Group Meetings Rev. Knock
8:00 p. m. 9:15	E V E N I N G S E R V I C E S							
	Rev. Gornitzka	Rev. Stolee	Rev. Knock Rev. Anderson Rev. Gornitzka	Dr. Miller	Rev. Randolph	Dr. Sodergren	Rev. Knock	Dr. Miller

Enlargement of the summer courses and schedule



Proposed chapel



L.B.I. Station Wagon – used to shuttle campers to and from Mount Carmel